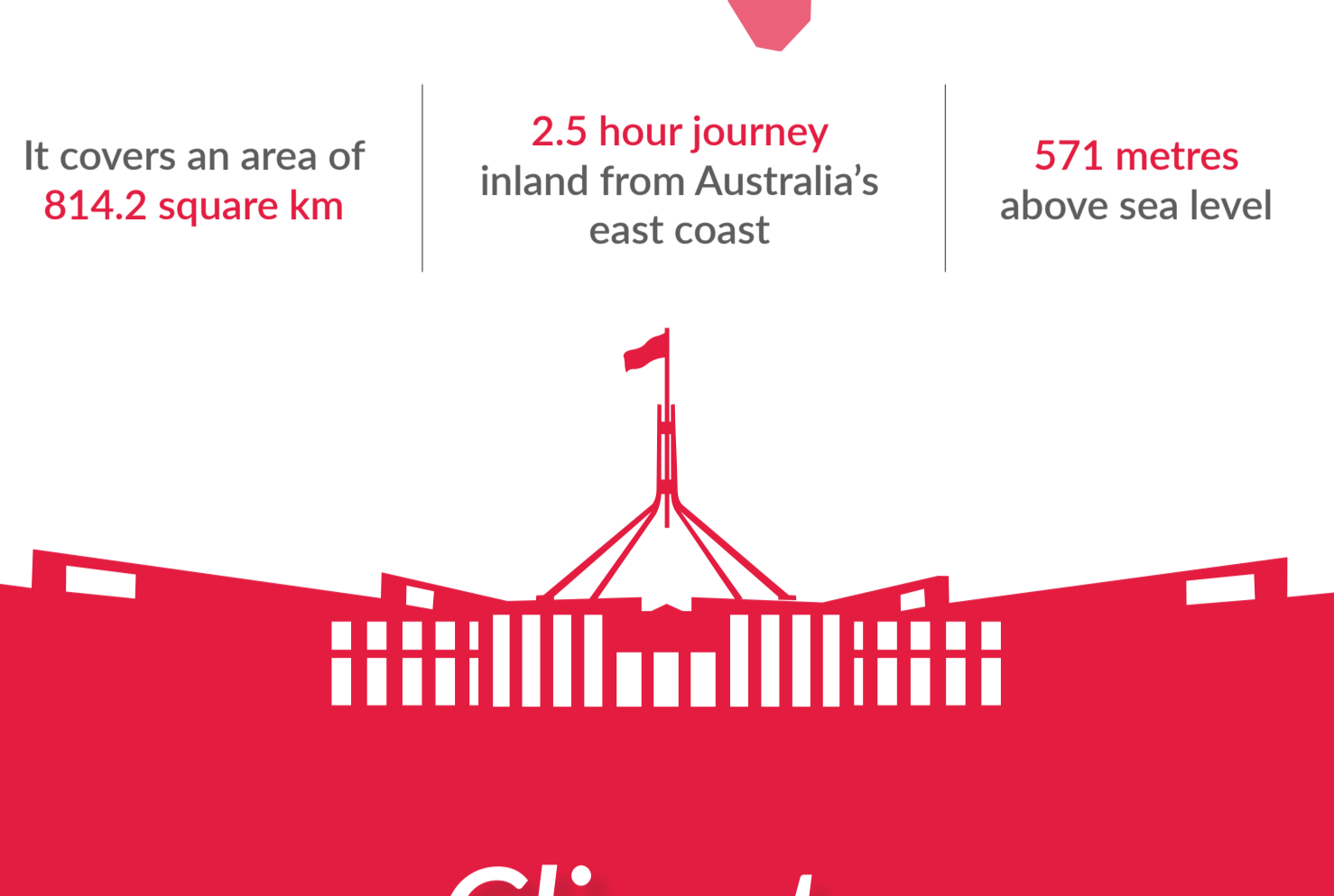


## Canberra. Do you know it?

It's more than just Australia's capital city. Canberra has one of the strongest and most secure economies in Australia, and it is a great place to do business.

## Location

Canberra is located at the northern end of the Australian Capital Territory (ACT)



## Climate

Canberra has four distinct seasons which bring their own beauty and charm.

Relatively dry continental climate with warm to hot summers and cool to cold winters.



### AVERAGE MAX TEMPS<sup>1</sup>

INVEST CANBERRA | CANBERRA

## Population

CANBERRA REGION

900,000

CANBERRA CITY (2015)

390,000

GROWTH RATE

0.95%  
Australia 0.66%<sup>2</sup>



The city looks set to reach **half a million** within the next 15 years

INVEST CANBERRA | CANBERRA

## Size of Economy

Canberra's Gross State Product (GSP) is around

**\$35 billion<sup>3</sup>**

It has a larger economy than either Tasmania or the Northern Territory



INVEST CANBERRA | CANBERRA

## Education

The best school system in Australia with excellent educational opportunities from preschool to post-graduate levels.

- More than 100 schools
- Five universities
- Several vocational institutions
- Caters to Australian and international students

INVEST CANBERRA | CANBERRA

## Labour Force & Industry Sectors

Canberra is known as the knowledge capital of Australia and is home to a number of Australia's leading research and development organisations.

Canberra has a young, highly educated workforce.

Over the last decade employment has grown by 12.5% or 2,300 jobs each year.<sup>3</sup>

- Half the GSP is made up of professional and technical services, education and training, public administration and healthcare.
- Strength in the following industry sectors:
  - Defence & Security
  - Digital Economy & E-Government
  - Health & Sports Science
  - Innovation & Higher Education
  - Space, Satellite and Spatial Science
  - Tourism infrastructure

## Lifestyle Factors

High incomes – the average income is nearly 40% higher than the national average.<sup>3</sup>

Housing is available in all areas, to a variety of budgets.

Planned city, easy to navigate and shorter than average commute times.

A 'city in a park', in easy reach of Sydney, the South Coast and the Snowy Mountains.

## So there it is.

Canberra's facts and trends in brief.

Want to know more?

And want to find out about setting up a successful business in Canberra?

Invest Canberra is here to help. Contact us today (02) 6207 5111 [www.investcanberra.com.au](http://www.investcanberra.com.au)

### SOURCES

1. Australian Bureau of Meteorology  
2. ABS Cat. No. 3222; ACT Government.  
3. Australian Bureau of Statistics.